

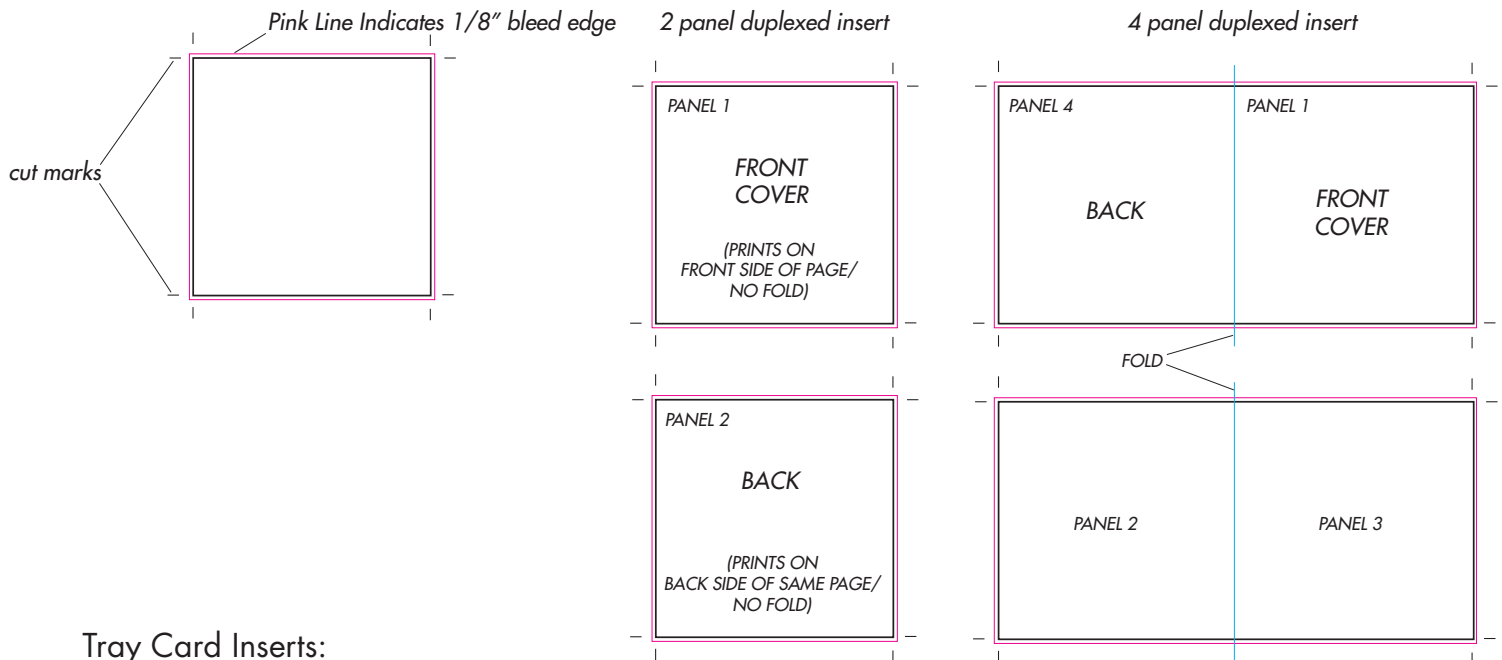
## Setting up artwork for

- Jewel Case Inserts,
- Tray Card Inserts

### Jewel Case Inserts:

Jewel Case Inserts are to be set up using one of the VSG templates available on our website. Artwork for inserts should be CMYK and high resolution (300 dpi). Jewel Case inserts can be printed as either a 2 panel duplexed insert (printed on both sides of the page front and back) or a 4 panel insert with a front and back cover that folds like a booklet. Artwork should allow for a 1/8" bleed edge for cutting and should also be left layered so that a template is visible but can be removed for final output purposes.

\*\*\*To receive a template for a booklet with more than 4 panels, music roll, sleeve or other special packaging, please contact your Project Manager or Sales Representative.\*\*\*



### Tray Card Inserts:

Tray card Inserts can be printed as a one sided or two sided insert depending on the type of jewel case that will be used. Cases with clear trays are recommended for two sided tray cards so that the artwork is visible when opening the jewel case. Artwork and text should be kept away from the cut edges and the perforation edges for each spine.

